

**Part Number:**

1990270 – Adventure Soft Pannier

1990278 – Modern Soft Pannier

**Models:**

Various



**WARNING:** Royal Enfield genuine accessories are designed to fit only the specific Royal Enfield motorcycle(s) that are specified above. They should not be fitted to any other type of motorcycle. Pay particular attention to the warnings and cautions contained in this instruction, failure to do so may result in an incorrect installation of the accessory which could result in an unsafe riding condition and possible accident. If in any doubt always seek help from your authorised Royal Enfield dealer.



**WARNING:** Before starting any accessory kit installation ensure the motorcycle is supported in a stable condition. Failure to support the motorcycle correctly could lead to motorcycle damage or personal injury.



**WARNING:** All fixings must be tightened to the torque values specified in this instruction. Failure to tighten fixings to the correct torque could result in an unsafe riding condition and possible accident.



**CAUTION:** Care should be taken when fitting any accessory kit. Incorrect handling of kit components or the use of incorrect tools could lead to component or motorcycle damage.

**NOTE:** The content of this instruction is subject to change at any time without notice or liability. Royal Enfield reserves the right to revise the information presented at any time.



**WARNING:** The maximum safe load for each bag is 3kg (6.6 lbs). Never exceed this loading limit as this may cause the motorcycle to become unstable and could lead to motorcycle damage or personal injury.



**WARNING:** Always ensure the mounting straps are correctly tensioned before riding the motorcycle. Failure to tighten the straps could result in an unsafe riding condition and possible accident.



**CAUTION:** Use of chemicals or high-pressure spray washers is not recommended for cleaning and may damage the bag. To help maintain its appearance, clean the bag using a sponge or cleaning cloth with low alkaline soap and water.

Parts Supplied: 1990270



| Item | Description                | Qty |
|------|----------------------------|-----|
| 1    | Pannier, RH                | 1   |
| 2    | Pannier, LH                | 1   |
| 3    | Shoulder Strap (not shown) | 2   |

Parts Supplied: 1990278



| Item | Description                | Qty |
|------|----------------------------|-----|
| 1    | Pannier, RH                | 1   |
| 2    | Pannier, LH                | 1   |
| 2    | Shoulder Strap (not shown) | 2   |

## ALL MODELS

**1** Identity the left hand pannier (1) and right hand pannier (2) for use on each side of the motorcycle. The sleeve on the rear of the pannier indicates which side of the motorcycle it is to be fitted to.

For Modern Panniers, see steps 2–6.

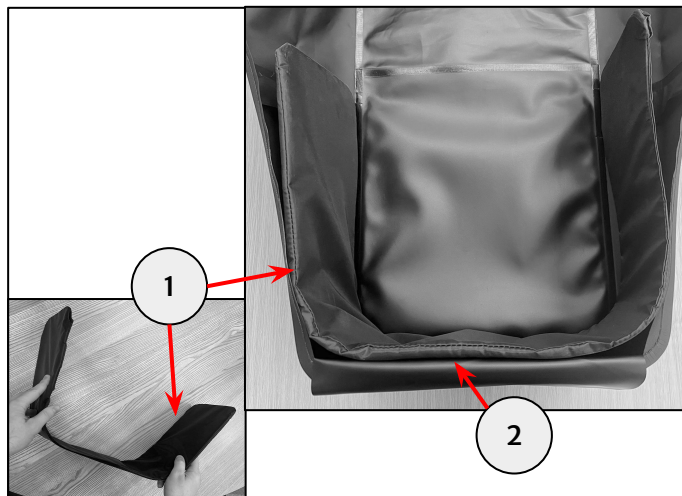
For Adventure Panniers, see steps 7–11.



### 1990278 Modern Soft Panniers Left hand side

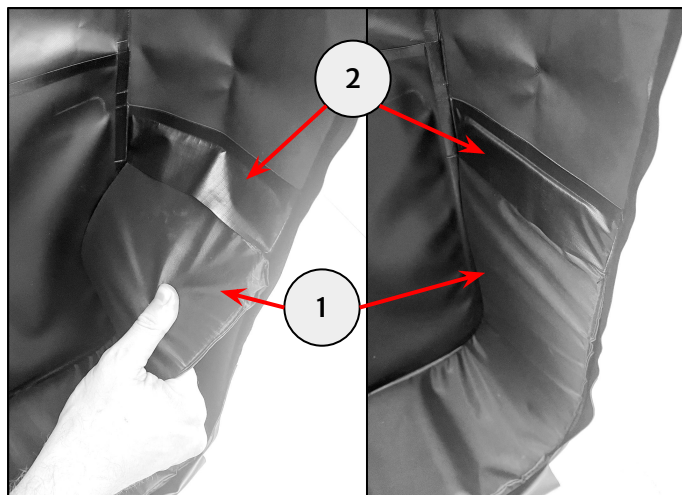
**2** Fold the reinforcing sleeve (1) and fit to the bottom of the pannier (2) as shown.

Note: Pannier modified to allow for ease of demonstration.

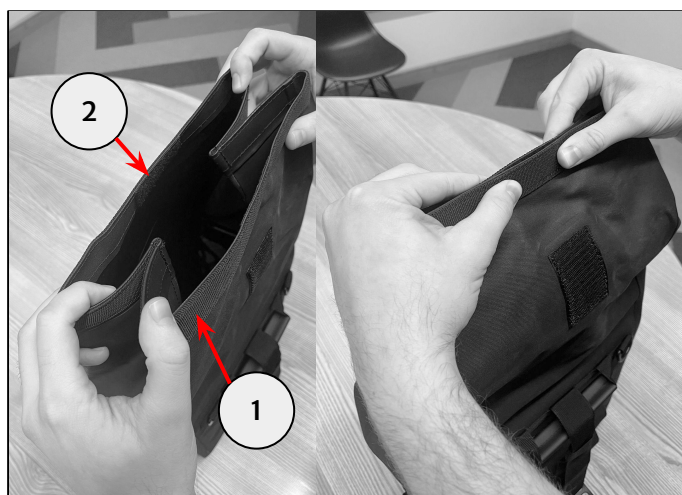


**3** Locate each end of the plastic reinforcing sleeve (1) into the internal side pockets (2) within the pannier.

Note: Pannier modified to allow for ease of demonstration.

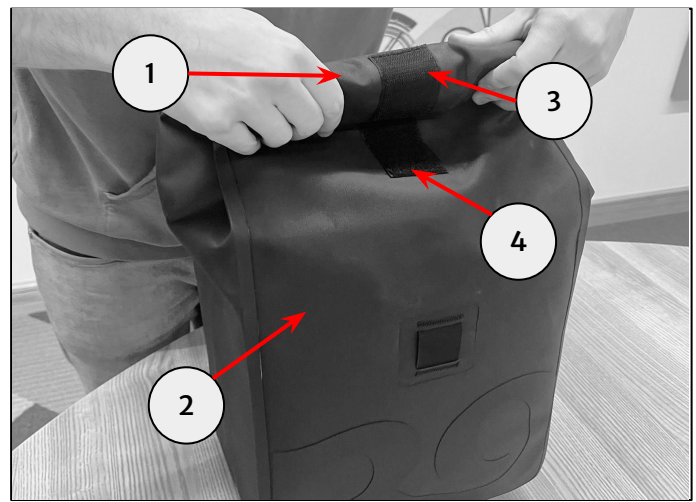


**4** Close the pannier opening (1), ensuring sides of pannier opening are folded together as shown, secure top of pannier together using the internal velcro tabs (2).



**5** Fold over the top of the pannier (1) and roll tightly towards the front face of the pannier (2). Ensure velcro on pannier opening (3) and main body of pannier (4) are secured together.

Roll tightly a minimum of 3 complete rolls or until secure.

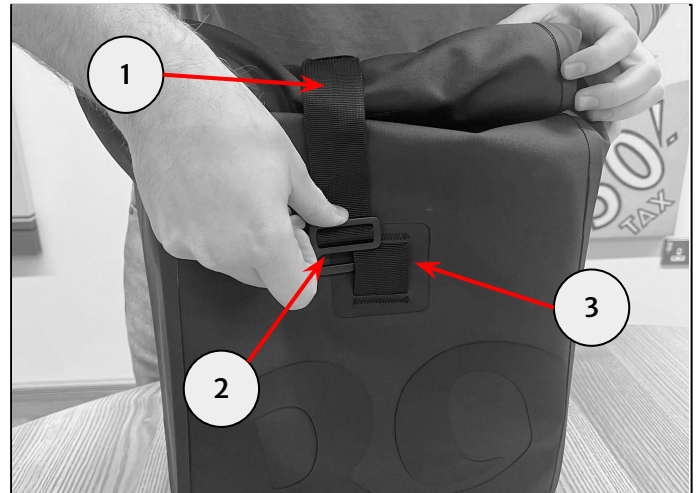


**6** Place the strap (1) over the pannier and secure the hook (2) through the loop on the front (3), as shown.

Ensure the hook is fully located through the loop. Fully tighten and secure the excess strap through the elasticated loop provided (4).

Repeat steps 2–6 for right hand side pannier.

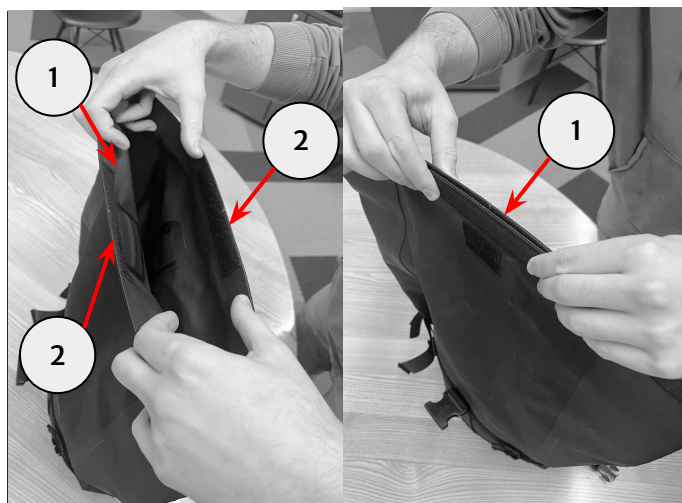
For fitment to pannier rails see steps 12–13.





## 1990270 Adventure Soft Panniers Left hand side

**7** Close the pannier opening (1), ensuring sides of pannier opening are folded together as shown, and secure top of pannier together using the internal velcro tabs (2).



**8** Fold over the top of the pannier (1) and roll tightly towards rear face of pannier (2) to take up excess material. Ensure velcro tab on pannier opening (3) and main body of pannier (4) are secured together.

Roll tightly a minimum of 3 complete rolls or until secure.



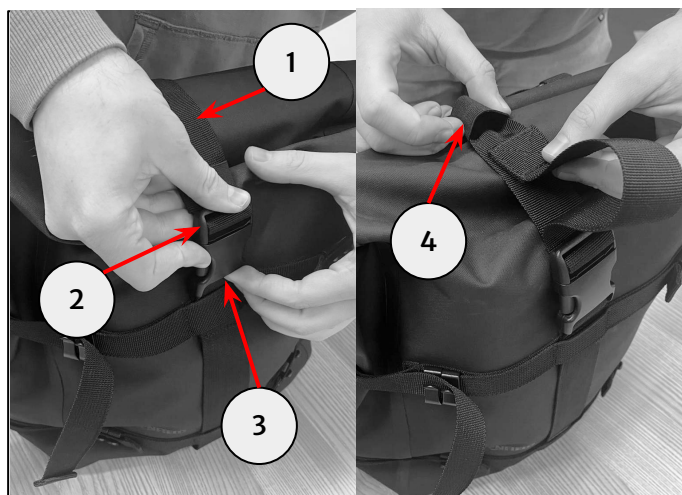
**9** Attach the side clip (1) to the buckle (2) and fully tighten as shown. Repeat for both sides.

Secure excess strap through the elasticated loop provided (3).



**10** Place the strap (1) over the pannier and secure clip (2) to the buckle (3) as shown.

Fully tighten and secure the excess strap through the elasticated loop provided (4).



**11** Tighten all horizontal straps (1), and secure excess strap strapping using clips (2) provided.

Note: Repeat for all four straps on the front of the pannier.

Repeat steps 7–11 for right hand side pannier.

For fitment to pannier rails see steps 12–13.



## Additional Information

Note: Plastic hoops on rear of panniers are for optional shoulder straps when pannier is not installed on motorcycle.



**WARNING:** After fitting any genuine Royal Enfield accessory always ride the motorcycle with caution and allow time to become familiar with any change in the motorcycle handling characteristics. Failure to become familiar with any change in the motorcycle handling characteristics may cause the motorcycle to become unstable and result in an accident.

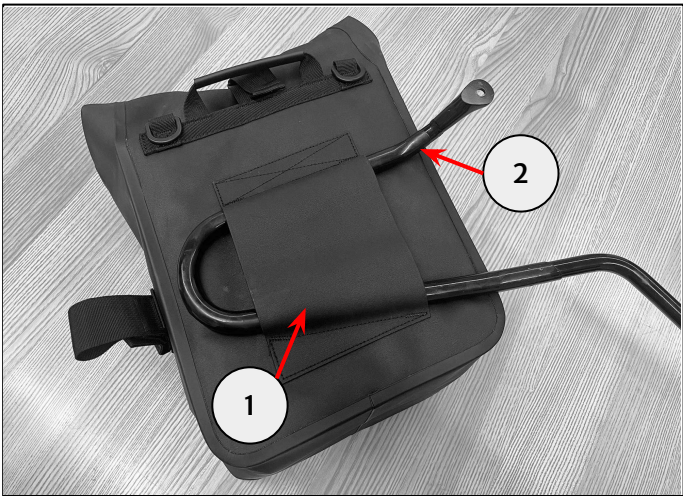


## Fitment to Pannier Rails Left Hand Side

**12** Slide the pannier sleeve (1) on to the pannier mounting rail (2) in the orientation shown.

Ensure the pannier sleeve (1) is pushed fully on to the pannier mount.

Note: Left hand side pannier rail is shown not attached to motorcycle for ease of demonstration.



**13** Secure the pannier (1) by looping the longer length of strap (2) around the pannier rail (3).

Fold the strap (2) and secure to the velcro patch (4).

Secure in place using the short velcro strap (5).

Repeat steps 12 and 13 on right hand side of motorcycle for fitment of right hand side pannier.

