

**Part Number:**  
KXA00462

**Models:**  
Guerrilla 450  
Himalayan (452cc only)



**WARNING:** Royal Enfield genuine accessories are designed to fit only the specific Royal Enfield motorcycle(s) that are specified above. They should not be fitted to any other type of motorcycle. Pay particular attention to the warnings and cautions contained in this instruction, failure to do so may result in an incorrect installation of the accessory which could result in an unsafe riding condition and possible accident. If in any doubt always seek help from your authorised Royal Enfield dealer.



**WARNING:** Before starting any accessory kit installation ensure the motorcycle is supported in a stable condition. Failure to support the motorcycle correctly could lead to motorcycle damage or personal injury.



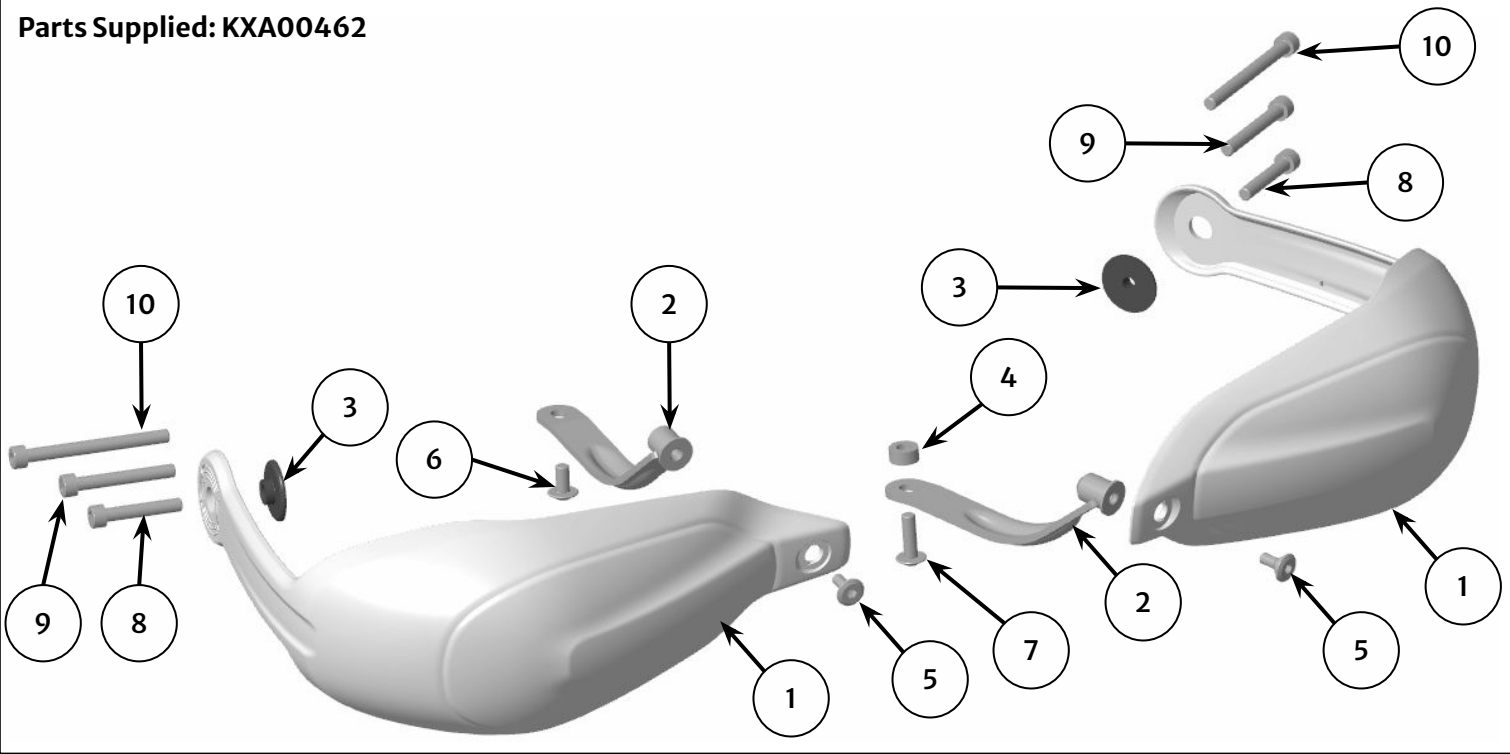
**WARNING:** All fixings must be tightened to the torque values specified in this instruction. Failure to tighten fixings to the correct torque could result in an unsafe riding condition and possible accident



**CAUTION:** Care should be taken when fitting any accessory kit. Incorrect handling of kit components or the use of incorrect tools could lead to component or motorcycle damage.

**NOTE:** The content of this instruction is subject to change at any time without notice or liability. Royal Enfield reserves the right to revise the information presented at any time.

Parts Supplied: KXA00462



Item	Description	Qty
1	Handguard Shroud (non handed)	2
2	Bracket (non handed)	2
3	Bar end spacer	2
4	Spacer, M6	1
5	Fixing, M5 x 12.5mm	2
6	Fixing, M6 x 12mm	1
7	Fixing, M6 x 20mm	1
8	Fixing, M6 x 35mm	2
9	Fixing, M6 x 45mm	2
10	Fixing, M6 x 65mm	2

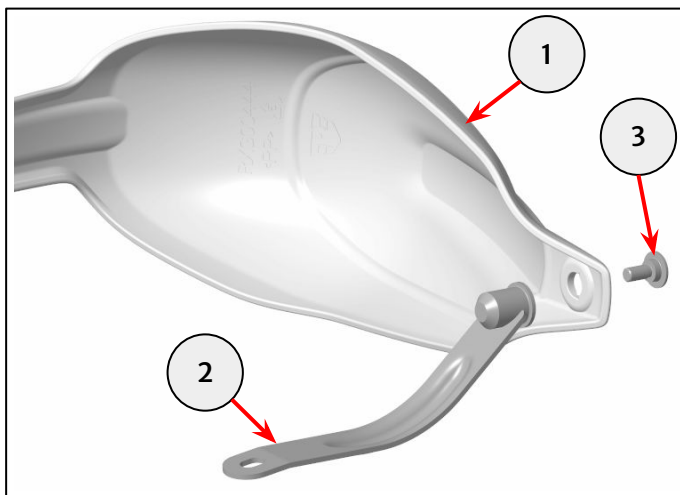
**1** Assemble the handguard shrouds (1) to the brackets (2) with a M5 x 12.5mm fixing (3) from the kit as shown.

Left hand assembly shown.

Do not fully tighten the fixing at this stage.



4mm hexagonal bit and ratchet

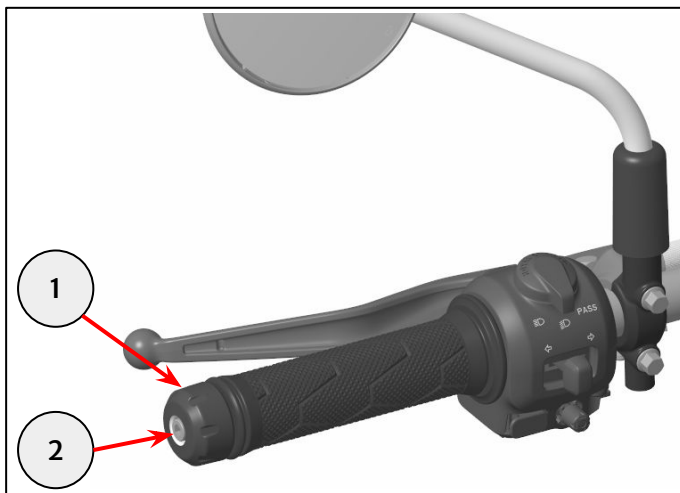


**2** Remove the left hand handlebar bar end weight (1) and retain for reuse.

Retain the fixing (2) for reuse if the motorcycle is to be returned to its original condition.



5mm hexagonal bit and ratchet



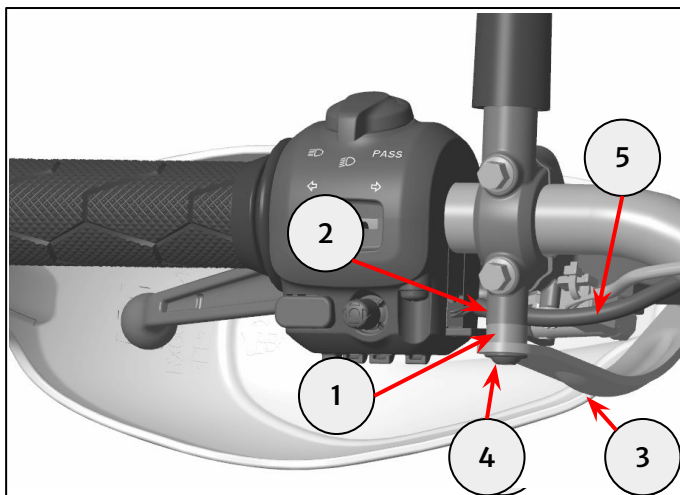
**3** Locate the M6 spacer (1) between the clutch clamp mount boss (2) and bracket (3). Fit the M6 x 20mm fixing (4). Align the bracket to locate the fixing in the rearward position of the bracket slot.

Do not fully tighten the fixing at this stage.

Note: Ensure the cable (5) is routed in front of the mount boss (2) and above the bracket (3) as shown.



4mm hexagonal bit and ratchet



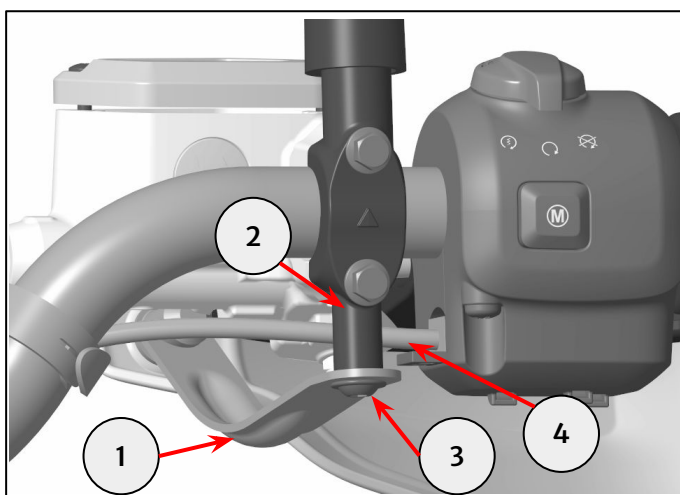
**4** Locate the bracket (1) on the front master cylinder clamp mount boss (2). Fit the M6 x 12mm fixing (3). Align the bracket (3) to locate the fixing in the forward position of the bracket slot.

Do not fully tighten the fixing at this stage.

Note: Ensure the cable (4) is routed in front of the mount boss (2) and above the bracket (1) as shown.




4mm hexagonal bit and ratchet



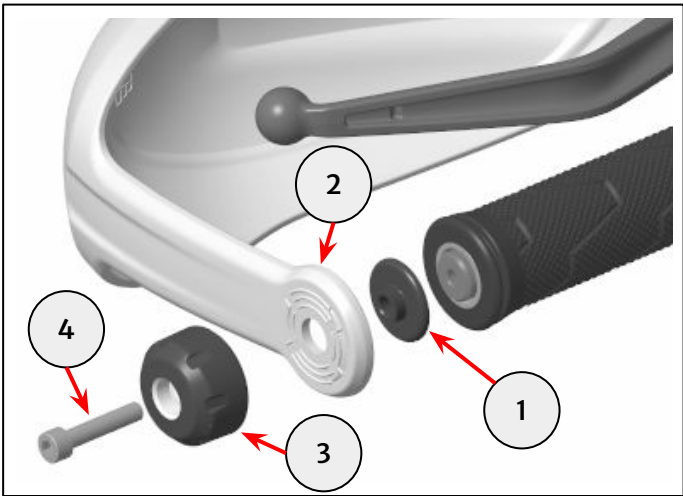
**5** Fit a bar end spacer (1), handguard (2) and reused bar end weight (3) to the handlebar end, as shown.

Refer to steps 6 and 7 for correct fixing guidance.

Do not fully tighten the fixing at this stage.



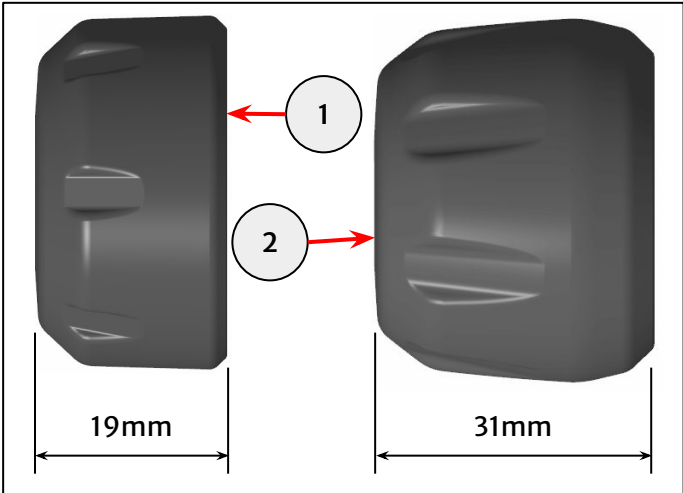
5mm hexagonal bit and ratchet



**For fitment without bar end mirrors**

**6** For 19mm length bar end weight (1) use a 35mm fixing from the kit.

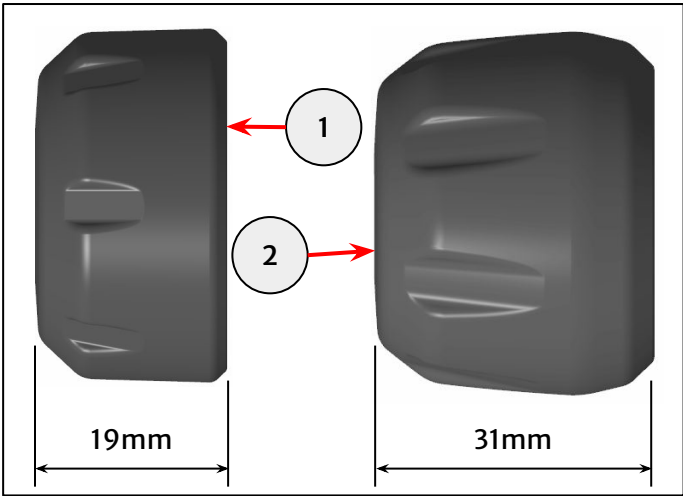
For a 31mm length bar end weight (2) use a 45mm fixing from the kit.



**For fitment with bar end mirrors**


**7** For 19mm length bar end weight (1) use a 55mm fixing from the bar end mirror mounting kit.

For a 31mm length bar end weight (2) use a 65mm fixing from the kit.



**8** Tighten the fixings as described below:

- Mounting bracket to shroud (1) to **5Nm**
- Through bar end (2) to **10Nm**
- Mounting bracket to clamp (3) to **5Nm**



4mm and 5mm hexagonal bit and torque wrench

